



LONI 2.0 – Optical, Routers and HPC

Friday, August 23, 2013

WebEx

9:00am – 10:00am

Agenda

- Statewide Metro-Ethernet WAN Redesign
- NOC Update
- LA-SiGMA HD Video Project
- Fiber construction Jobs
- Developing Plans
- Network Architecture
- Campus Spotlight – ???
- Q&A

Statewide Metro-Ethernet WAN Redesign

- Lafayette area – 100% complete
- Baton Rouge area – 100% complete
- New Orleans area – 100% complete
- Monroe area – 100% complete
- Alexandria area – 100% complete
- Shreveport area – 100% complete
- Lake Charles – cutover TBD

NOC Update — Ethan Bateman

- Security Incidents
- DMCA/RIAA Complaints

LA-SiGMA HD Video Project - Lonnie Leger

- August 22nd – Equipment Delivery
- August 26th – Delivery and Installation Planning

Fiber Construction Jobs – Jeremy Songne

- LONI to Nicholls – continue to conduct fiber testing
- LONI to Tulane – splice scheduled for 8/23/13
- LONI to DOTD in New Orleans – splice scheduled for 8/29/13
- LONI to DOTD in Baton Rouge – groundbreaking scheduled for _____

Developing Plans - Lonnie Leger

- Dark fiber opportunities to replace AT&T discontinued service in the urban markets
- Cloud services from Venyu – working on a CEA
- Cloud services from AT&T – working on a CEA
- Cloud services from Internet2 – working on a MSA

Network Architecture

Fewer Routers

6 core routers

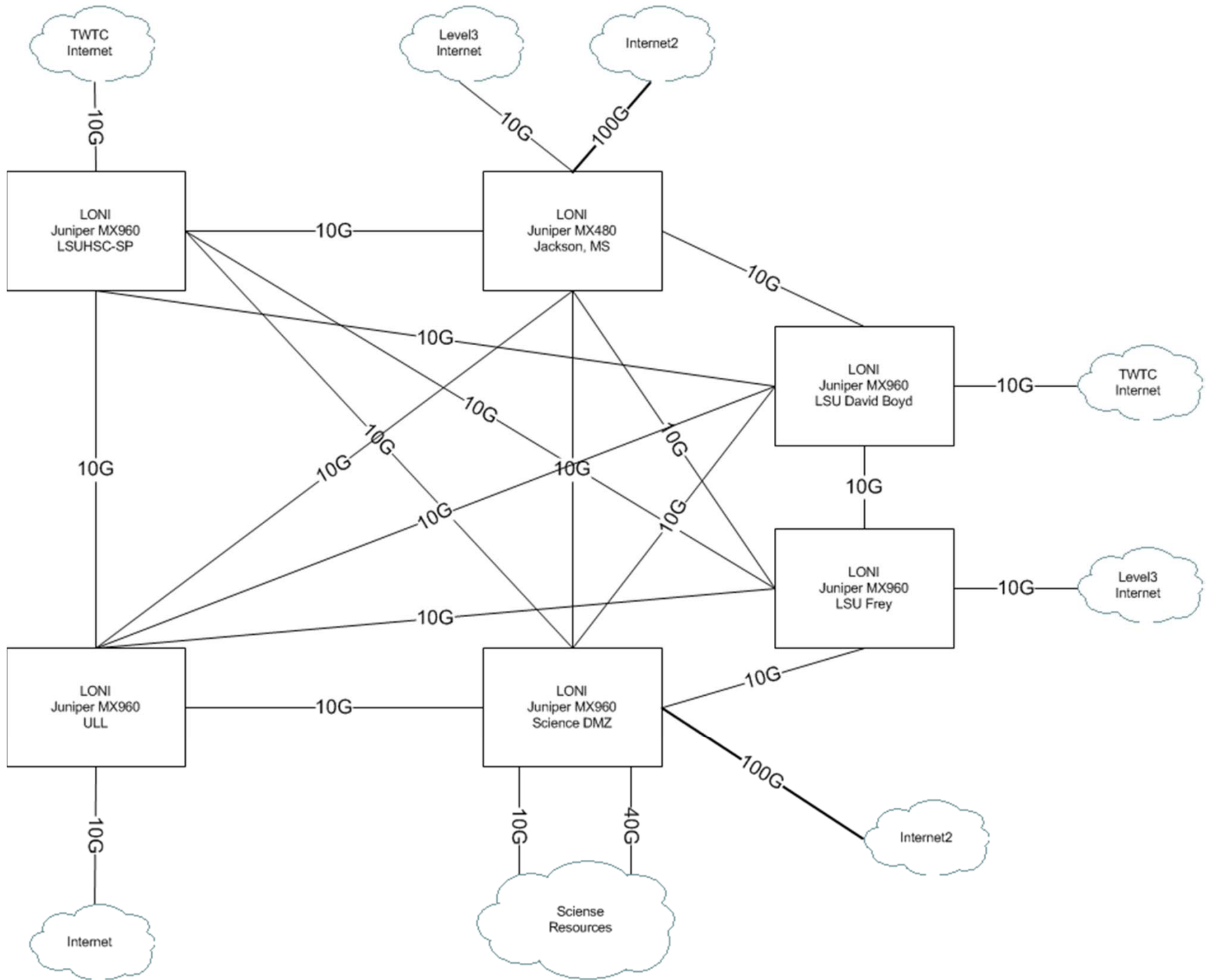
Only 10Gbps and higher offered
to directly connected campus

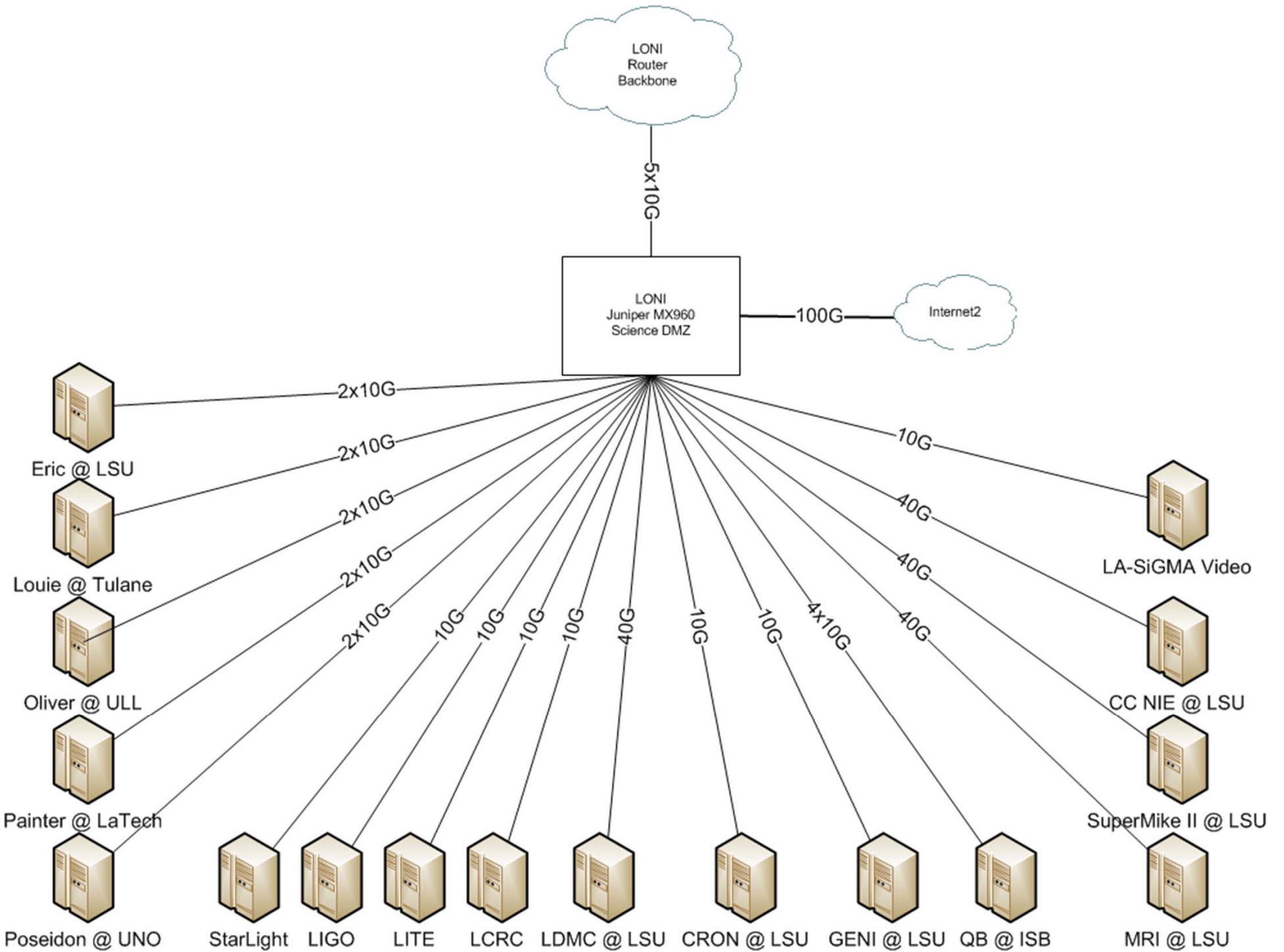
Backbone Campus Participation

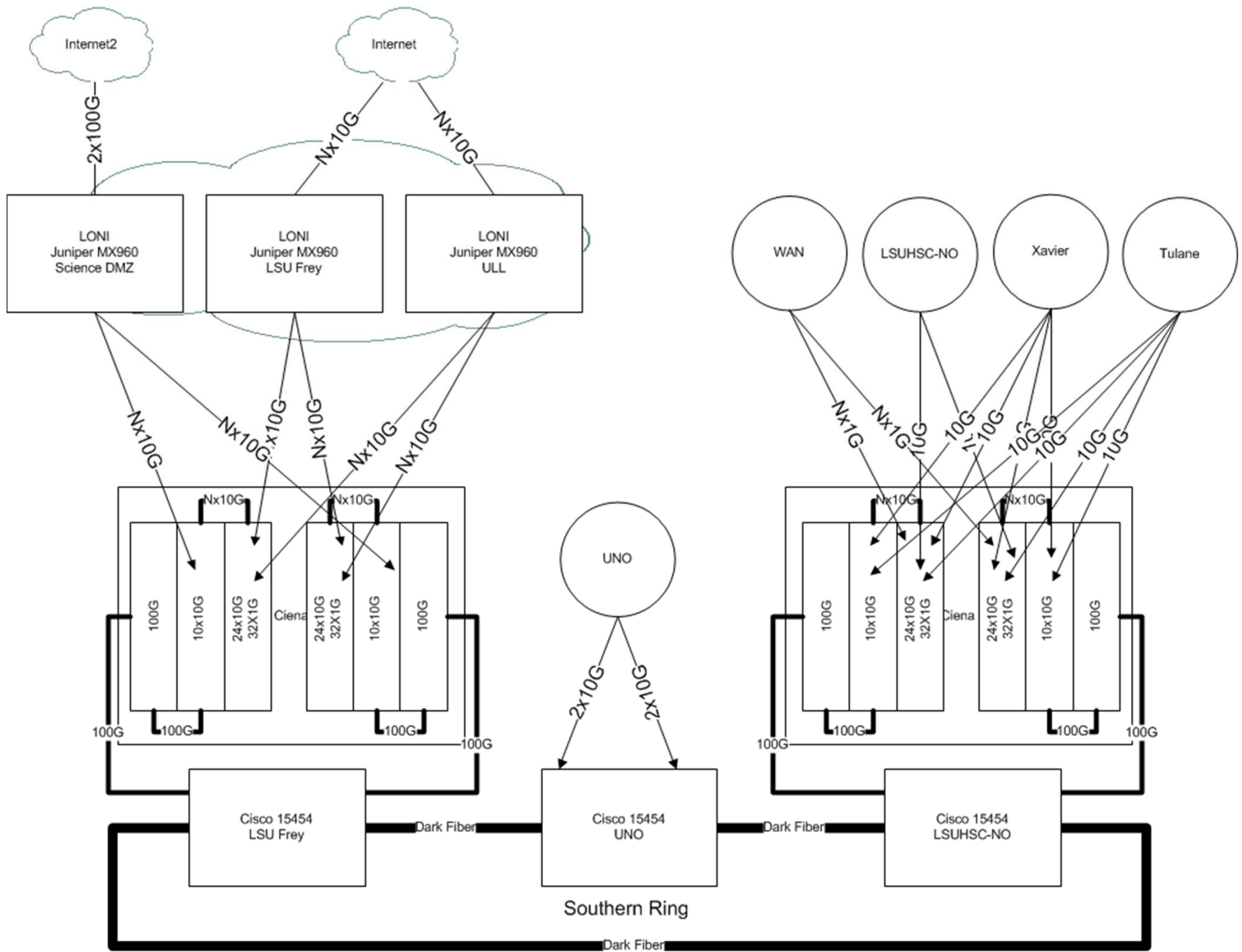
- Investment
- N x 10Gbps
- 100Gbps
- Discussion and Feedback

WAN Campus Participation

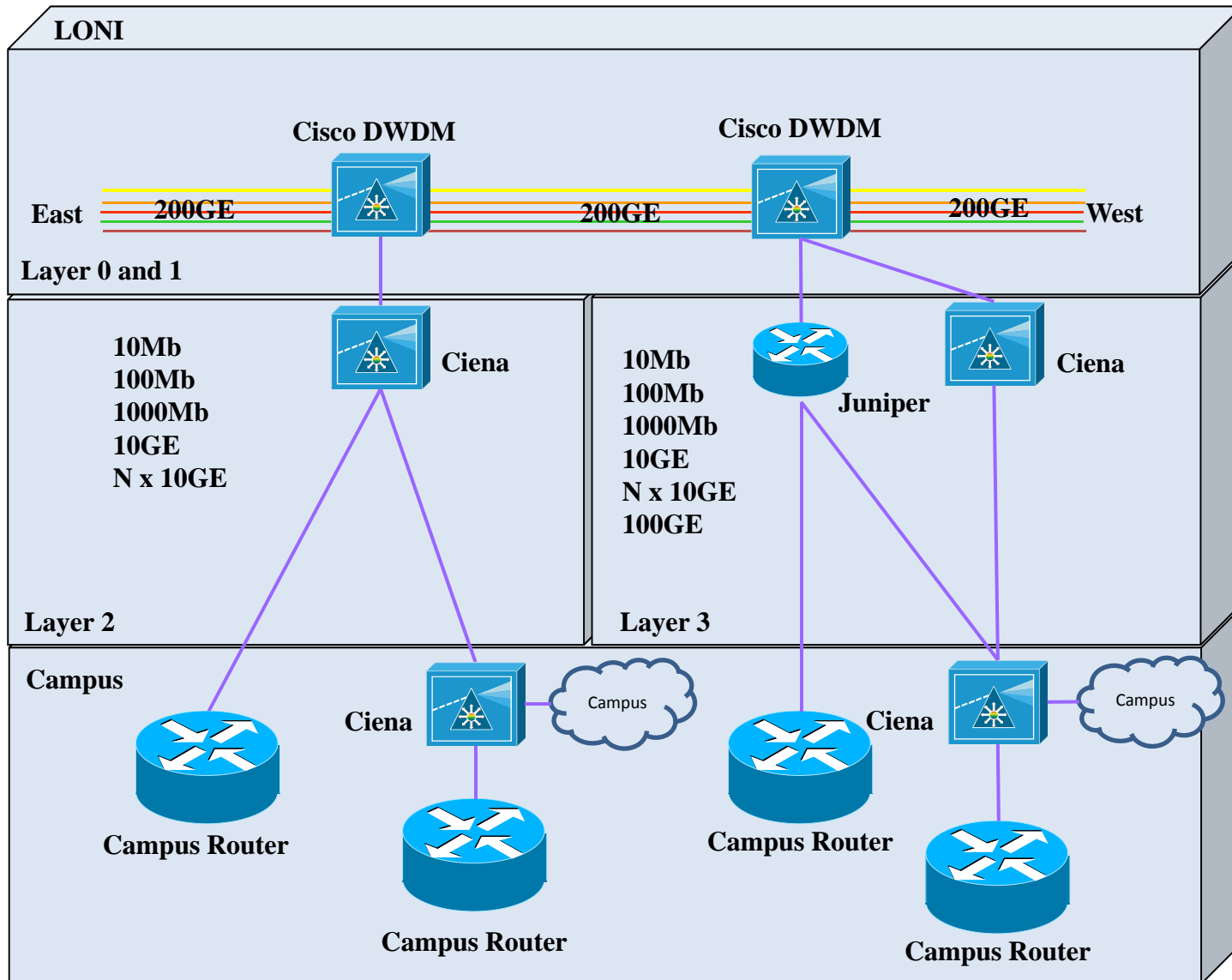
- Investment
- 10/100/1000Mbps
- Discussion and Feedback







Building Blocks



Q & A

Lonnie Leger

lonnie@lsu.edu

225-578-8391