

# LONI Bandwidth Pricing Model

July 26, 2012

LSU Frey 206-207 Conference Room

WebEx

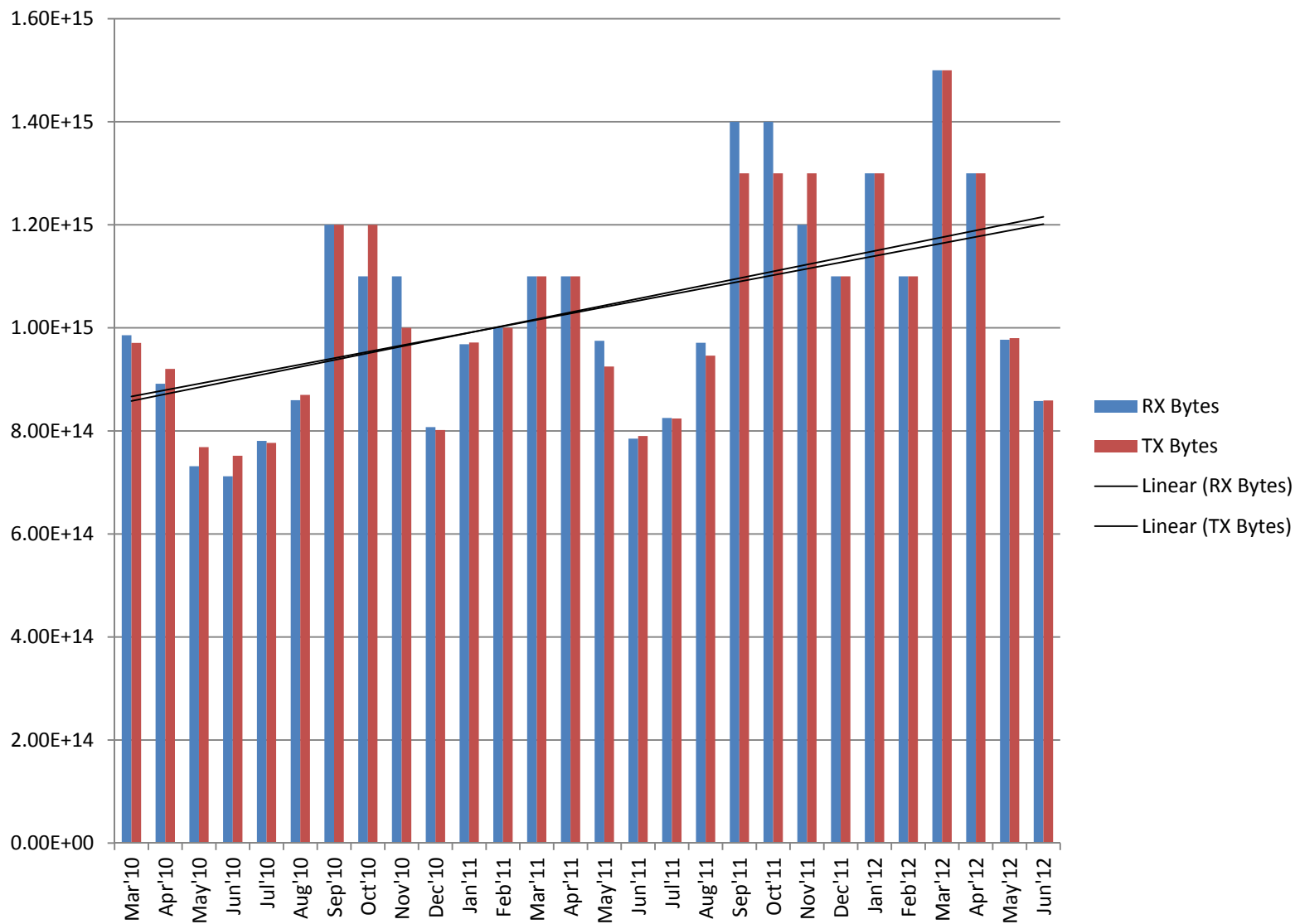
# Outline

- Background
- Moving Forward
- Baseline
- Approach
- Methodology
- Result
- Effect

# Background

- Authority of Service
- Current Service
- Current Fee
- Fee Authority
- New Internet Contract
- Bandwidth Demand

# Statewide Demand



# Moving Forward

- Council Decision
- Proposed Service
- Proposed Fee Calculation
- Process to Adoption

# Baseline

- Timeframe
  - Start = January 1, 2012 at midnight
  - Stop = May 1, 2012 at midnight
- Observations
  1. Sunday to Sunday, 24 hours a day
  2. Monday to Friday, 24 hours a day
  3. Monday to Friday, 8am to 5pm
- Bits per Second
  - 95<sup>th</sup> Percentile

# Approach

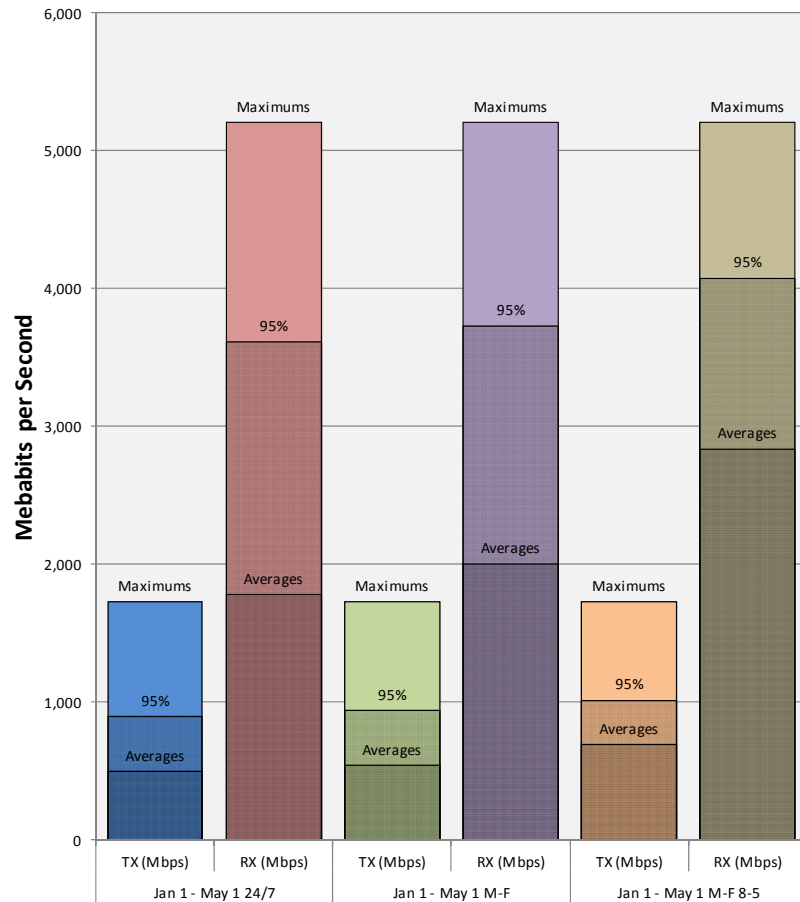
- Utilize our existing capability provided through [Statseeker](#)
- Consulted with [LSU Experimental Statistics Department](#)
- Consulted with [LSU ITS Department](#)
- Utilized a new capability with [SAS](#), Business Analytics and Business Intelligence Software

# Methodology

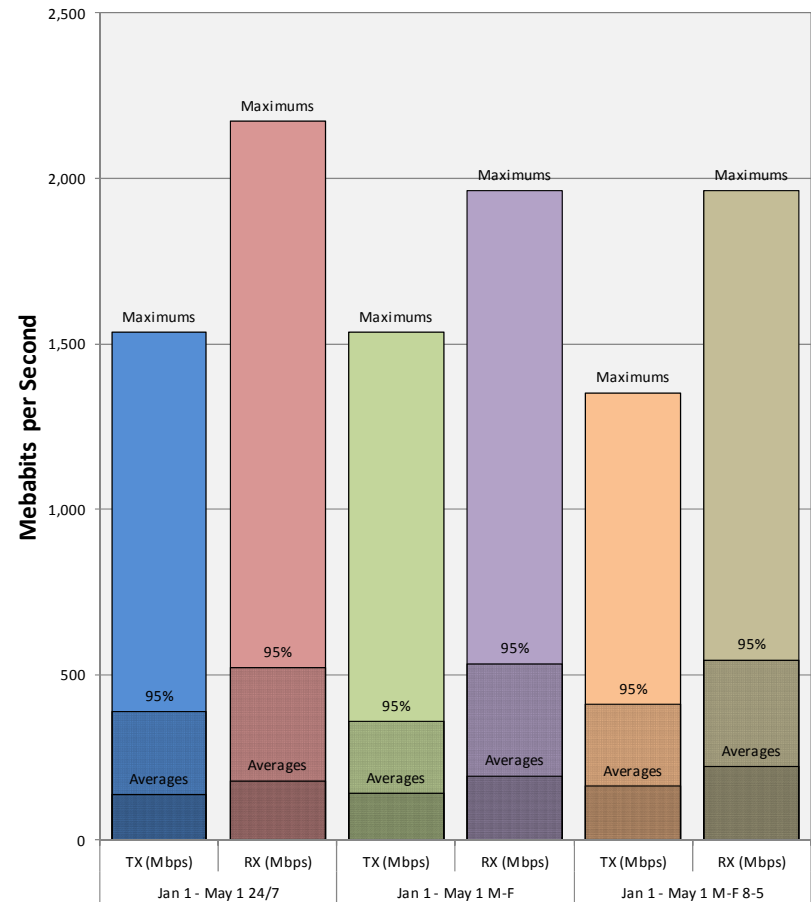
- Export the three observations from [Statseeker](#)
- Import the three observations into [SAS](#)
- Chart the results in Microsoft Excel 2010



# Result



Customer: Circuit: Aggregate Internet



Customer: Circuit: Internet2 Aggregate

	Jan 1 - May 1 24/7		Jan 1 - May 1 M-F		Jan 1 - May 1 M-F 8-5	
	TX (Mbps)	RX (Mbps)	TX (Mbps)	RX (Mbps)	TX (Mbps)	RX (Mbps)
Maximums:	1,732	5,203	1,732	5,203	1,732	5,203
95 Percentile:	895	3,617	941	3,729	1,016	4,078
Averages:	498	1,783	542	2,005	692	2,838

Billed Connection (Mbps)

Circuit Connection (Mbps)

	Jan 1 - May 1 24/7		Jan 1 - May 1 M-F		Jan 1 - May 1 M-F 8-5	
	TX (Mbps)	RX (Mbps)	TX (Mbps)	RX (Mbps)	TX (Mbps)	RX (Mbps)
Maximums:	1,534	2,172	1,534	1,961	1,351	1,961
95 Percentile:	389	521	358	534	409	545
Averages:	137	180	140	193	162	222

Billed Connection (Mbps)

Circuit Connection (Mbps)

# Effect

- Network design
  - How many Internet drains does LONI make available to each institution?
- Manage costs
  - How much does LONI secure on your behave?
- Manage selection
  - Each additional Internet drain comes with an additional benefit and cost
- Policy and Audit

# Remember

We are more than just bandwidth!

# Finally

- How should we plan to conduct the one-on-one conversations as quickly as possible?
  - Webex?
  - In person?
  - By institution?
  - By system?
  - By geography?